

## Simpl-E Parts Ecommerce Webservice Definitions and Requirements Specification Customer Orders (v.1)

### 1) Overview

Participating Dealerships / DMS providers that choose to receive Customer Orders from the eCommerce Portal via Web Service instead of file shall develop, host and publish this web service and which complies to the specifications of this document.

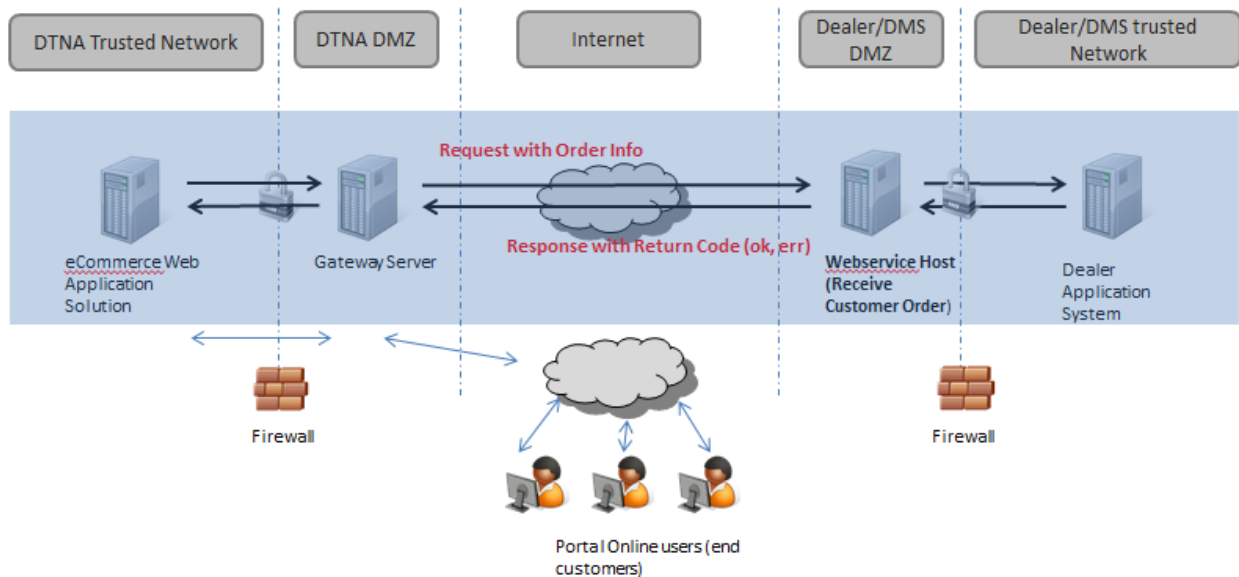
The DTNA eCommerce application system may be calling the dealer provided web service at any given time an online user (end customer) submits an order via the portal.

The web service is of synchronous nature, handling a request message containing order header and item information. The dealer system will receive the order into the system and send a short response message back containing a status (order receipt successfully or failure occurred).

To ensure proper integration with the DTNA Simpl-E Parts eCommerce System, it is critical that the dealer system / DMS implement the web service according to specification. Fieldnames, Structure of XML message etc. should not be changed from the proposed layout. If there is a special need to make a change or adjustment, please contact the IT implementation team at DTNA. Web services not implemented according to this specification may not be able to integrate with eCommerce website.

#### Performance Considerations:

Due to the integrated nature of this web service with the Simpl-E Parts website and in order to provide an enjoyable end user online experience, it is important to keep response times as low as possible.



## 2) Technical Summary

Calling System	DTNA system (Paragon) hosting the Simpl-E Parts Application / Portal
Responding System / Hosting System	Proprietary Dealer System or DMS provider
Type	Synchronous – Request and Response
Expected Response Time	< 2 seconds
Technology	SOAP over SSL, XML based messaging
Webservice Authentication	SOAP embedded UserId and Password will be provided in the service call.
Optional Backend Authentication & Authorization	Optional UserId and Password embedded in the request payload which can be used for authentication and authorization in Dealers / DMS backend system.
Error Handling	All application errors to be embedded in the Status node in the response. No SOAP Faults please.

Note:

For your reference a complete WSDL is attached to this package (**MI\_IE41\_EPartCustOrder.wsdl**). This is the DTNA side implementation of this web service but you may use it to facilitate your side of the web service implementation by implementing the request and response messages accordingly.

## 3) Webservice Request Message Definition

The request message will contain four sections

1 – Optional Login & Password for Dealer/DMS Backend system

They are originally provided by the Dealer / DMS provider and will be populated into the payload of each service call. This may be useful if the Dealer / DMS system requires additional authentication at the backend system or server.

2 – Order Header Info

This node is mandatory and will provide order header information that is applicable to the whole order.

3 – Collection of Order Items

At least one item will be send.

4 – ShipTo Address Info

1.1	UserId	Mandatory (1..1)	String	30	DTNA account login ID as required by Dealer / DMS system to for backend connection.
1.2	UserPswd	Mandatory (1..1)	String	30	DTNA Password as required by Dealer / DMS system.
2	Header	Mandatory (1..1)			Order Header
2.1	Action	Mandatory (1..1)	String	1	Order Action, "1"=create, "2"=change
2.2	DealerID	Mandatory (1..1)	String	10	DTNA Dealer Code
2.3	CustomerID	Mandatory (1..1)	String	10	End Customer ID
2.4	OrdNum	Mandatory (1..1)	String	10	eCom Order Number
2.5	PoNum	Optional (0..1)	String	15	Customer Purchase Order Number
2.6	ShipMethod	Optional (0..1)	String	1	Shipping Method, "D"=Dealer Delivery, "E"=Express, "S"=Standard, "W"=Will Call
2.7	CreatedOn	Optional (0..1)	String	14	Order Creation Date&Time format YYYYMMDDhhmmss
2.8	TbMemberNo	Optional (0..1)	String	25	Truck Bucks Membership Number
2.9	CouponCode	Optional (0..unbounded)	String	25	Coupon Code applicable to order
2.10	CustomData	Optional (0..1)			Collection of Special Purpose Custom Data
2.10.1	Data	Mandatory (1..unbounded)			A Key / Value Pair
2.10.1.1	Key	Mandatory (1..1)	String	10	Key / Name identifier for Value node
2.10.1.2	Value	Mandatory (1..1)	String	50	Value
3	Items	Mandatory (1..1)			Collection of Items
3.1	Item	Mandatory (1..unbounded)			Order Item Data
3.2	Action	Mandatory (1..1)	String	1	Order line item Action, "1"=create, "2"=change, "3"=cancelled
3.3	ItemNum	Mandatory (1..1)	String	6	eCom Order Item Number
3.4	PartNum	Mandatory (1..1)	String	25	Part Number
3.5	PartType	Mandatory (1..1)	String	1	"P" = DTNA Part, "D"=Dealer Part
3.6	Qty	Mandatory (1..1)	String		Ordered Quantity
3.7	Unit	Mandatory (1..1)	String	3	Sales Unit of Measure, EA=eaches etc. See value mapping
3.8	NetPrice	Optional (0..1)	String		Net Price of the Part
3.9	CoreCharge	Optional (0..1)	String		Core Charge - Only for Reman Parts
3.1	Curr	Mandatory (1..1)	String	3	Currency Code per ISO 4217. "USD" = us dollars (default), "CAD" canadian dollars
3.11	FilledBy	Mandatory (1..1)	String	1	Item filled by 'D'=Dealer or 'P'=DTNA PDC
3.12	Text	Optional (0..1)	String	75	Line Item Comments
3.13	CustomData	Optional (0..1)			Collection of Special Purpose Custom Data
3.13.1	Data	Mandatory (1..unbounded)			A Key / Value Pair
3.13.1.1	Key	Mandatory (1..1)	String	10	Key / Name identifier for Value node
3.13.1.2	Value	Mandatory (1..1)	String	50	Value
4	ShipToAddr	Mandatory (1..1)			Order Address Info
4.1	Name	Mandatory (1..1)	String	30	Name
4.2	Street1	Mandatory (1..1)	String	30	Street Address 1
4.3	Street2	Optional (0..1)	String	30	Street Address 2
4.4	City	Mandatory (1..1)	String	40	Name of the City
4.5	State	Mandatory (1..1)	String	3	Name of the State -2 char code
4.6	ZIP	Mandatory (1..1)	String	10	Zip Code
4.7	Country	Mandatory (1..1)	String	3	Name of the Country
4.8	Text	Optional (0..1)	String	75	Comments

⇒ Find the XSD file for developer's convenience attached in package:

**eCom\_DT\_CustOrd\_Request.xsd**

#### 4) Webservice Response Message Definition

One section:

## 1 – Status Info

Contains information about success, failure or application problems occurred during the execution of the service call at the Dealer / DMS system. We expect all errors and exceptions be communicated in this way as part of the response payload. Please no SOAP Fault messages.

Response Message					
<u>Level</u>	<u>XML NodeName</u>	<u>Occurrences</u>	<u>XSD Type</u>	<u>expected max. content Length</u>	<u>Description</u>
<b>1</b>	<b>Status</b>	Mandatory (1..1)			<b>Status Information</b>
					"0" = Success - Order received, "2" = Failed to Post, "8" = Not Authorized, "99" = Other exception as specified in clear text
1.1	RetCo	Mandatory (1..1)	String	2	
1.2	RetMsg	Optional(0..1)	String	200	Clear text of return message

⇒ Find the XSD file for developer's convenience attached in package:

**eCom\_DT\_CustOrd\_Response.xsd**

## 5) Value Mappings

### a) Request Message – Order->Header->Action

Value	Description
1	New order creation
2	Change to existing order

### b) Request Message – Order->Header->Shipping Method

Value	Description
D	Dealer Delivery
E	Express
S	Standard
W	Will Call

### c) Request Message – Order->Item->Action

Value	Description
1	New order line
2	Change to existing order item.
3	Cancellation of existing order item. Only for items not yet being processed by dealer, or PDC fulfilled items.

### d) Request Message – Order->Item->Part Type

Value	Description
P	DTNA Part
D	Dealer Part

### e) Request Message – Order->Item->Curr

Value	Description
USD	US Dollars
CAD	Canadian Dollars

## f) Request Message – Order-&gt;Item-&gt;FilledBy

Value	Description
D	Item fulfilled by Dealer
P	Item fulfilled by DTNA PDC location

## g) Request Message- Order-&gt;Item-&gt;Unit

Base Unit of Measure	Descr
EA	Eaches
PAA	Pair
FT	Feet
PAC	Pack
ROL	Role
GAL	US gallon
L	Liter
BOX	Box
LB	US pound
BT	Bottle
M	Meter
KG	Kilogram
YD	Yard
PL	Pail
QT	Quart, US liquid
TB	Tube
"	Inch
BAG	Bag
JG	Jug
DR	Drum
FT2	Square foot
PT	Pint, US liquid
YD2	Square Yard
TTE	Tote
MM	Millimeter
KEG	Keg
FOZ	Fluid Ounce US
OZ	Ounce
KIT	Kit
PAL	Pallet
G	Gram